



# MSME-TOOL ROOM LUDHIANA

## CENTRAL TOOL ROOM, LUDHIANA

Ministry of Micro Small & Medium Enterprises  
Government of India



### CAPITAL GOODS

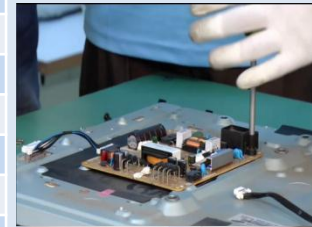


**AGED BETWEEN 18 TO 35 YEARS**

**ADMISSION OPEN FOR FOLLOWING COURSES UNDER PUNJAB SKILL DEVELOPMENT MISSION**

**NO FEES WILL BE CHARGED FROM URBAN POOR (Family income upto Rs. 3 Lacs annually)**

Sr. No.	Sector Skill Council	Name of the Course	Educational Qualification	Duration (in months)
1	Automotive	CNC Operator / Machining Technician L3	10th class	4
2	Automotive	Lathe Operator	8th class	5
3	Automotive	Machining Assistant	9th class	4
4	Automotive	Press Shop Operator L4	10th class	5
5	Capital Goods	CNC Operator - Turning	10th class	5
6	Capital Goods	CNC Operator - Vertical Machining Centre	10th class	5
7	Capital Goods	CNC Setter cum operator - Turning	10th class	7
8	Capital Goods	CNC Setter cum operator - Vertical Machining Centre	10th class	7
9	Capital Goods	Fitter – Mechanical Assembly	10th class	6
10	Capital Goods	Manual Metal Arc Welding/Shielded Metal Arc Welding Welder	10th class	6
11	Capital Goods	Operator - Conventional Milling	10th class	5
12	Capital Goods	Operator - Conventional Surface Grinding Machines	10th class	4
13	Capital Goods	Operator - Non-Conventional Electric Discharge Machine (Spark Erosion)	10th class	5
14	Capital Goods	Tool and Die Maker	10th class	9
15	Electronics	Field Engineer – TV	Diploma/ ITI / 8th class	4
16	Electronics	Field Technician – Other Home Appliances	Diploma/ ITI / 8th class	5
17	Electronics	Field Technician – Refrigerator	10 <sup>th</sup> / 8 <sup>th</sup> class +2 years	4
18	Electronics	Field Technician – Washing Machine	10 <sup>th</sup> / 8 <sup>th</sup> class +2 years	4
19	Electronics	Mobile Phone Hardware Repair Technician	Diploma / ITI	3



**Address:- A-5, Focal Point, Ludhiana – 141010. For admissions visit our website at [www.ctrludhiana.com](http://www.ctrludhiana.com)**

**Ph. -91-161-2670058, 59, 2676166, Extn. 251, 252, FAX: 0161-2674746**

**E-Mail : [training@ctrludhiana.com](mailto:training@ctrludhiana.com), [info@ctrludhiana.com](mailto:info@ctrludhiana.com)**